

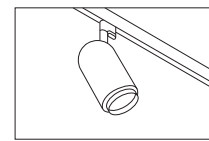
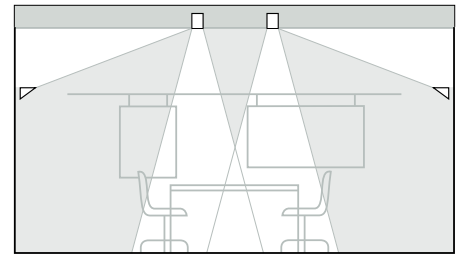
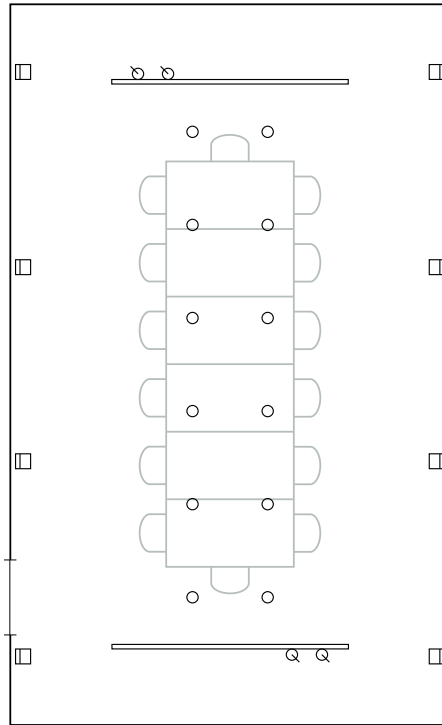
4.8 Conference rooms

Conference rooms are used for a variety of purposes: for discussions, seminars, small-scale presentations, or even a working lunch. The lighting design concept must therefore be multifunctional and include the possibility of creating a prestigious atmosphere.

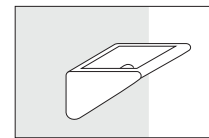
Conference lighting requires a balanced ratio of horizontal and vertical lighting. Horizontal lighting makes for good shaping qualities and adequate brightness. Vertical components produce a bright and friendly atmosphere and promote communication. Extreme direct or diffuse light conditions should be avoided.

The presentation of pictures, products, notes made on the board or on a flip-chart require additional accent lighting on the end walls of the conference room. The lighting on the walls must be reduced to a suitable level to allow people to write by when slides or overhead foils are projected. It is therefore practical to plan a lighting installation comprising circuits which can be switched and dimmed separately, or even a programmable lighting control system, which allows preprogrammed scenes to be recalled at the touch of a button.

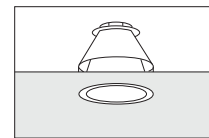
Ceiling washlights provide indirect light for the general lighting of the room. The end walls can be illuminated by track-mounted spotlights or washlights, if required. Two rows of recessed downlights provide direct light on the table, which can serve as the main lighting for a working lunch or dinner, or for people to write by when slides are being shown.



Track with spotlights.

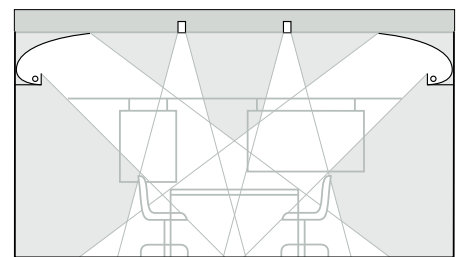
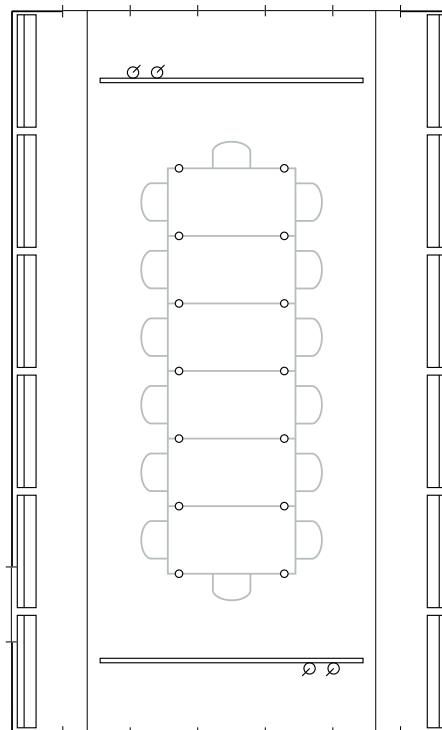


Wall-mounted ceiling washlight for halogen lamps.

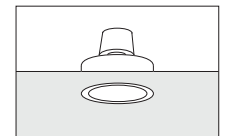


Recessed downlight for halogen lamps or general service lamps.

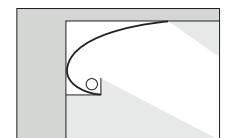
Secondary luminaires arranged along the side walls provide general lighting with balanced horizontal and vertical components. The luminaire design, which harmonizes with the geometry of the space makes for optimum control of direct and reflected glare. Two rows of downlights for recessed mounting in the ceiling provide direct, prestigious light on the table, which can serve as the main lighting for a working lunch or dinner, or for people to write by when slides are being shown. Track-mounted spotlights in front of the end walls can be used to accentuate visual aids.



Recessed downlight for low-voltage lamps.



Integral secondary luminaire for fluorescent lamps.



Track with spotlights.

